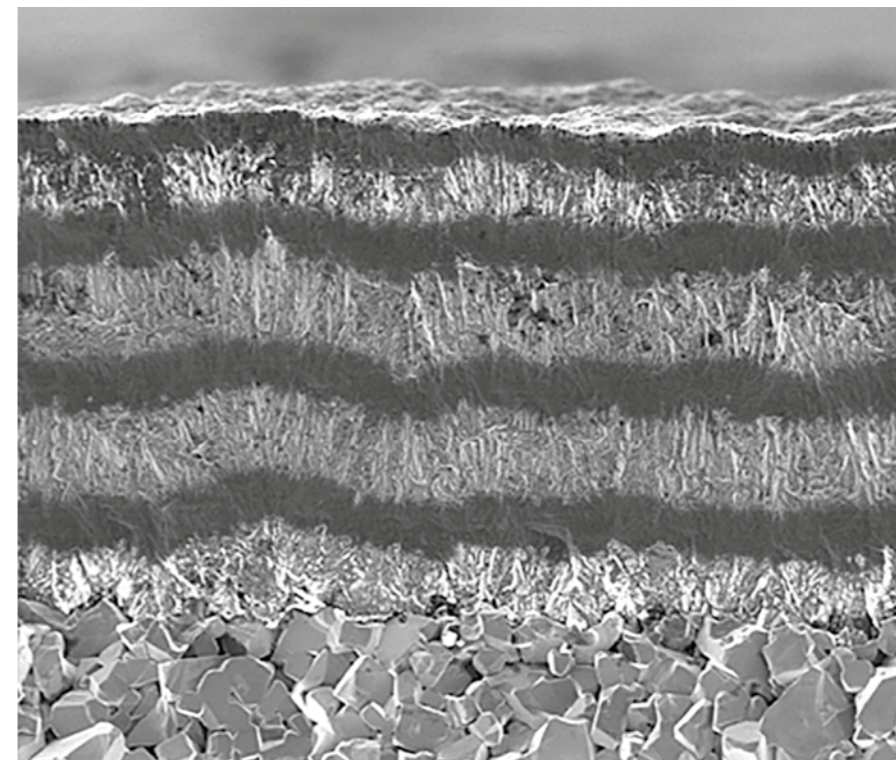




As the market leader, CemeCon offers sustainable Diamond coatings for the challenges in the machining of graphite, in aviation, 3C (computer, communication and consumer electronics) industry and medical technology.



Smooth, adherent and excellently interlocked thanks to patented Multilayer diamond coating

CC800[®] Diamond

Coating space, number x (w x l x h)	[mm ³]	3 x (50 x 560 x 70)
Maximum substrate dimensions, Ø x h	[mm]	Tools 30 x 500
Loading	[kg]	250
Process method		Hot-Filament
Electrically conductive coatings		yes
Electrically non-conductive coatings		yes
Electrically non-conductive substrates		yes
Connected load	[kW]	98
External dimensions (w x l x h)	[mm ³]	1,260 x 3,600 x 2,070